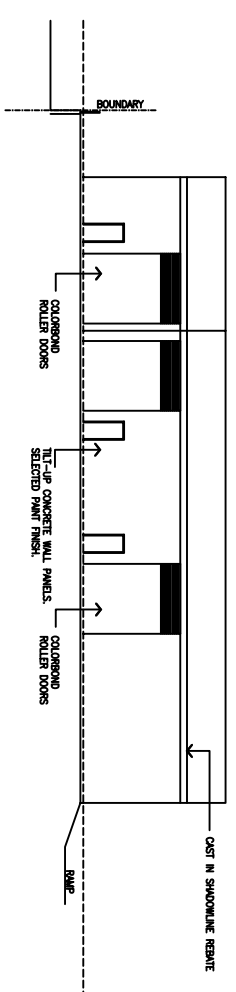
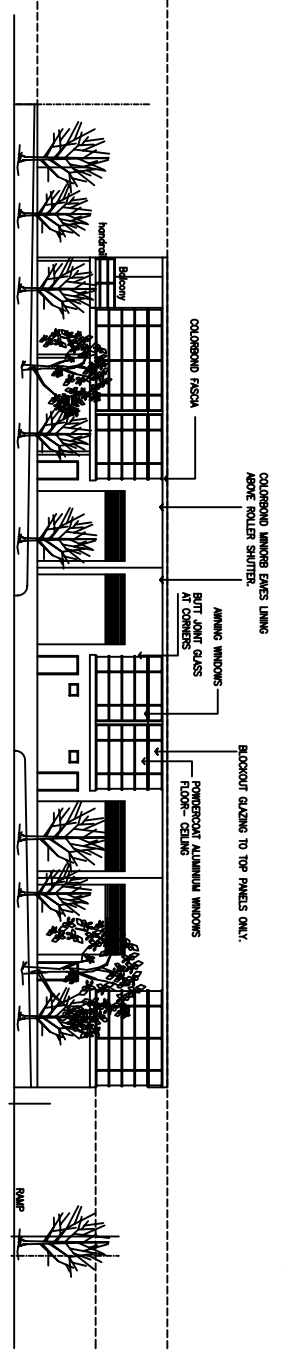


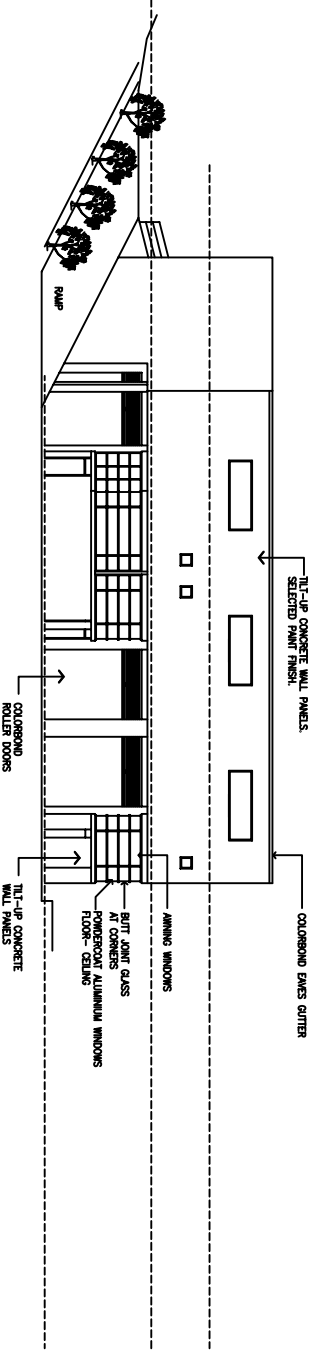
NORTH-EAST ELEVATION - BLOCK A



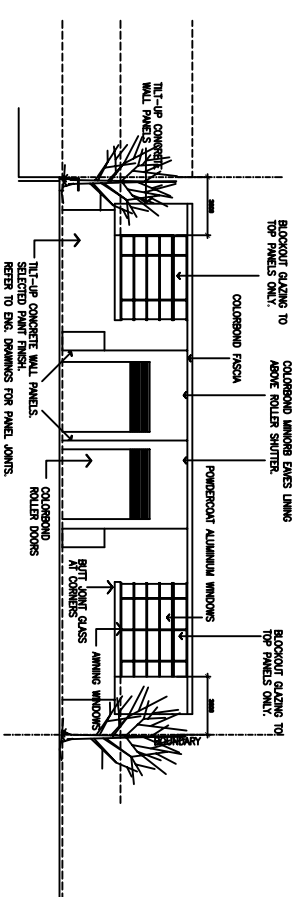
SOUTH-WEST ELEVATION - BLOCK B



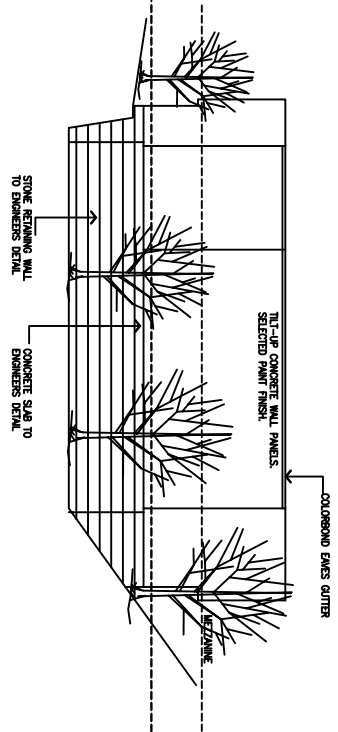
SOUTH-WEST ELEVATION - BLOCK A



NORTH-EAST ELEVATION - BLOCK B



SOUTH-WEST ELEVATION - BLOCK C



NORTH-EAST ELEVATION - BLOCK C

ALL DIMENSIONS AND DETAILS SHOULD BE CHECKED PRIOR TO UNDERPINNING CONSTRUCTION OR FABRICATION AND CONTROLLED FOR ACCURACY. COMPLIANCE TO AUSTRALIAN STANDARDS, THE BUILDING CODE OF AUSTRALIA, WORKCOVER & OTHER OHS REGULATIONS, TERMS OF THE DEVELOPMENT CONSISTENT AND/OR CONSTRUCTION CERTIFICATE AND LOCAL COUNCIL REQUIREMENTS IN ALL APPLICABLE GOOD BUILDING PRACTICE SHOULD BE MAINTAINED. SEE PERTHSHIRE CORPORATION, B202.

- Issue D - 25/09/2005. Remove rear windows of block C. Remove also window droppers.
- Issue C - 23/11/2005. Remove window block B. Add windows block A front elevation.
- Issue B - 2/11/2005. Section 98 Application no.3 Block C windows and wall layout changes.
- Amendment B - 17/10/2005. Splay in wall unit 17, Block C.

North East Elevation  
Project  
Issue A - 24/08/2005. Construction Certificate drawing.

Project  
FACTORY WAREHOUSES  
MT. KURING-GAI  
12-14 BEAUMONT ROAD, MT. KURING-GAI

Drawing Title  
ELEVATIONS  
Factory Units  
INDUSTRIAL PARKS  
OF AUSTRALIA

Scale: 1:200  
Drawn: [Blank] Approved: [Blank] Contracted: [Blank] Date: [Blank]  
IP/A: [Blank] IP/A: [Blank] IP/A: [Blank] 23-11-2005  
Project Number: [Blank] Drawing Number: [Blank] Issue: [Blank]  
Beumont: [Blank] WVO - 07 [Blank] D

P.O. BOX 375  
WARRIMONGA 2076  
Phone: 0412 272 699  
Fax: (02) 9457 8622

FOR CONSTRUCTION DRAWING